



PTP 820/850 ACCESSORIES GUIDE

ANTENNA

Microwave 2 - 17

POWER ACCESSORIES

Power Supply 18

SFP ACCESSORIES

PTP 8xx SFP 19 - 20

CABLE ACCESSORIES

RJ45 21

Coaxial 21

DC Cable 21

Optical 21

Miscellaneous 22

Glands 22

Connector 22

LPU AND GROUNDING

Lightning Protection Units 23

Grounding 24

Microwave Antenna Guide

Microwave



N060082D150A
 PTP 820 2' ANT,SP,6GHz,RFU-C
 TYPE&UDR70 - Radiowave
 Dish Size: 0.6 m (2 ft)
 Frequency: 5.725 - 7.125 GHz
 Gain: 30.8 dBi
 Polarity: Single
 Connector: UDR70
 Shipping: NA & CALA Only



N060082D151A
 PTP 820 3' ANT,SP,6GHz,RFU-C
 TYPE&UDR70 - Radiowave
 Dish Size: 0.9 m (3 ft)
 Frequency: 5.725 - 7.125 GHz
 Gain: 34.3 dBi
 Polarity: Single
 Connector: UDR70
 Shipping: NA & CALA Only



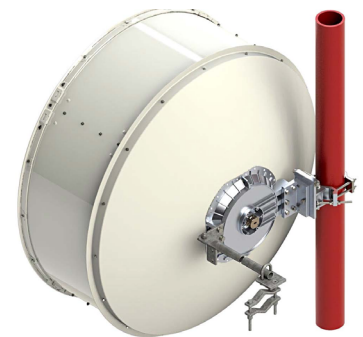
N060082D128A
 PTP 820 3' ANT,SP,6GHz,RFU-C
 TYPE&Std UDR70 - Andrew
 Dish Size: .9 m (3 ft)
 Frequency: 5.925 - 7.125 GHz
 Gain: 34.0 dBi
 Polarity: Single
 Connector: UDR70
 Shipping: Global



N060082D152A
 PTP 820 4' ANT,SP,6GHz,RFU-C
 TYPE&UDR70 - Radiowave
 Dish Size: 1.2 m (4 ft)
 Frequency: 5.725 - 7.125 GHz
 Gain: 37.2 dBi
 Polarity: Single
 Connector: UDR70
 Shipping: NA & CALA Only



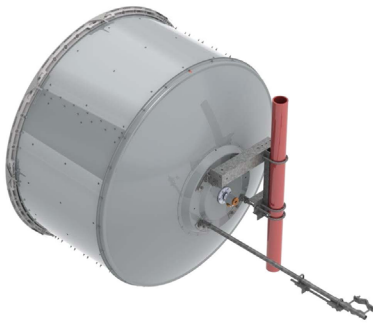
N060082D129A
 PTP 820 4' ANT,SP,6GHz,RFU-C
 TYPE&Std UDR70 - Andrew
 Dish Size: 1.2 m (4 ft)
 Frequency: 5.925 - 7.125 GHz
 Gain: 36.0 dBi
 Polarity: Single
 Connector: UDR70
 Shipping: Global



N060080L001B
 SHPX4 - 4' ANT, 6W GHz with
 Radome, Dual Pol, CPR137G
 Dish Size: 1.2 m (4 ft)
 Frequency: 5.925 - 7.125 GHz
 Gain: 36.2 dBi
 Polarity: Dual
 Connector: CPR137G
 Shipping: Global

Microwave Antenna Selection Guide

Microwave



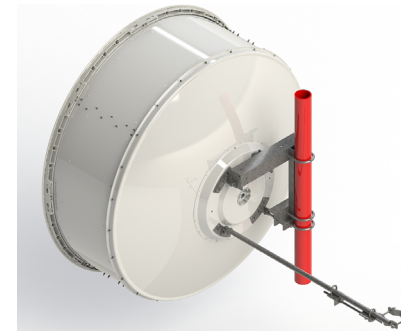
N060082D163A

USX6 - 6' ANT, 6W GHz with Radome, Dual Pol, CPR137G
 Dish Size: 1.8 m (6 ft)
 Frequency: 5.925 – 7.125 GHz
 Gain: 39.3 dBi
 Polarity: Dual
 Connector: CPR137G
 Shipping: Global



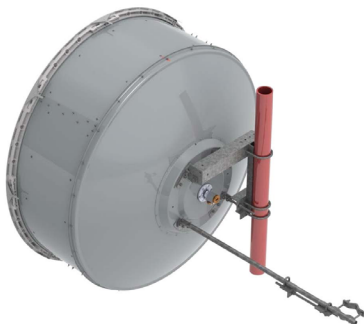
N060082D153A

PTP 820 6' ANT,SP,6GHz,RFU-C TYPE&UDR70 - Radiowave
 Dish Size: 1.8 m (6 ft)
 Frequency: 5.725 7.125 GHz
 Gain: 39.8 dBi
 Polarity: Single
 Connector: UDR70
 Shipping: NA & CALA Only



N060082D132A

PTP 820 6' ANT,SP,6GHz,RFU-C TYPE&Std UDR70 - Andrew
 Dish Size: 1.8 m (6 ft)
 Frequency: 5.925 – 7.125 GHz
 Gain: 39.8 dBi
 Polarity: Single
 Connector: UDR70
 Shipping: Global



N060080L006B

HX6 - 6' ANT, 6W GHz with radome, Dual Pol, CPR137G
 Dish Size: 1.8 m (6 ft)
 Frequency: 5.925 – 7.125 GHz
 Gain: 39.9 dBi
 Polarity: Dual
 Connector: CPR137G
 Shipping: Global



N070082D306A

PTP 820 2' ANT,SP,7_8GHz,RFU-C TYPE&UBR84 - Radiowave
 Dish Size: 0.6 m (2 ft)
 Frequency: 7.125 8.5 GHz
 Gain: 31.6 dBi
 Polarity: Single
 Connector: UBR84
 Shipping: NA & CALA Only



N070082D284A

PTP 820 2' ANT,SP,7_8GHz,RFU-C TYPE&Std UBR84 - Andrew
 Dish Size: 10.6 m (2 ft)
 Frequency: 7.1 – 8.5 GHz
 Gain: 32.2 dBi
 Polarity: Single
 Connector: UBR84
 Shipping: Global

Microwave Antenna Selection Guide

Microwave



N070082D307A

PTP 820 3' ANT,SP,7_8GHz,RFU-C
 TYPE&UBR84 - Radiowave
 Dish Size: 0.9 m (3 ft)
 Frequency: 7.125 - 8.5 GHz
 Gain: 35.1 dBi
 Polarity: Single
 Connector: UBR84
 Shipping: NA & CALA Only



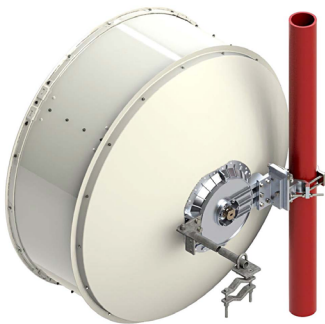
N070082D285A

PTP 820 3' ANT,SP,7_8GHz,RFU-C
 TYPE&Std UBR84 - Andrew
 Dish Size: 0.9 m (3 ft)
 Frequency: 7.1 - 8.5 GHz
 Gain: 35.8 dBi
 Polarity: Single
 Connector: UBR84
 Shipping: Global



N070082D308A

PTP 820 4' ANT,SP,7_8GHz,RFU-C
 TYPE&UBR84 - Radiowave
 Dish Size: 1.2 m (4 ft)
 Frequency: 7.125 - 8.5 GHz
 Gain: 37.2 dBi
 Polarity: Single
 Connector: UBR84
 Shipping: NA & CALA Only



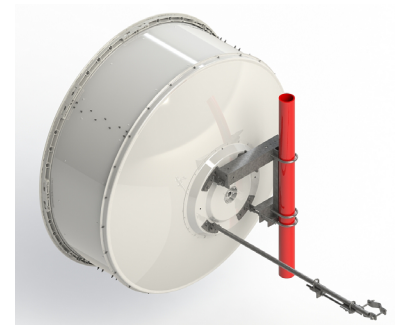
N070082D286A

PTP 820 4' ANT,SP,7_8GHz,RFU-C
 TYPE&Std UBR84 - Andrew
 Dish Size: 1.2 m (4 ft)
 Frequency: 7.125 - 8.5 GHz
 Gain: 37.7 dBi
 Polarity: Single
 Connector: UBR84
 Shipping: Global



N070082D309A

PTP 820 6' ANT,SP,7_8GHz,RFU-C
 TYPE&UBR84 - Radiowave
 Dish Size: 1.8 m (6 ft)
 Frequency: 7.125 - 8.5 GHz
 Gain: 40.7 dBi
 Polarity: Single
 Connector: UBR84
 Shipping: NA & CALA Only



N070082D288A

PTP 820 6' ANT,SP,7_8GHz,RFU-C
 TYPE&Std UBR84 - Andrew
 Dish Size: 1.8 m (6 ft)
 Frequency: 7.125 - 8.5 GHz
 Gain: 41.1 dBi
 Polarity: Single
 Connector: UBR84
 Shipping: Global

Microwave Antenna Selection Guide

Microwave



N110082D096A

PTP 820 2' ANT,SP,11GHz,RFU-C
TYPE&UBR100 - Radiowave
Dish Size: 0.6 m (2 ft)
Frequency: 10.7 11.7 GHz
Gain: 34.8 dBi
Polarity: Single
Connector: UBR100
Shipping: NA & CALA Only



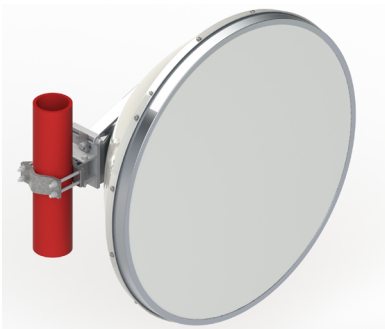
N110082D072A

PTP 820 2' ANT,SP,10_11GHz,RFU-C
TYPE&Std UBR100 - Andrew
Dish Size: 0.6 m (2 ft)
Frequency: 10.125 – 11.7 GHz
Gain: 35.2 dBi
Polarity: Single
Connector: UBR100
Shipping: Global



N110082D098A

PTP 820 3' ANT,SP,11GHz,RFU-C
TYPE&UBR100 - Radiowave
Dish Size: 0.9 m (3 ft)
Frequency: 10.7 11.7 GHz
Gain: 39 dBi
Polarity: Single
Connector: UBR100
Shipping: NA & CALA Only



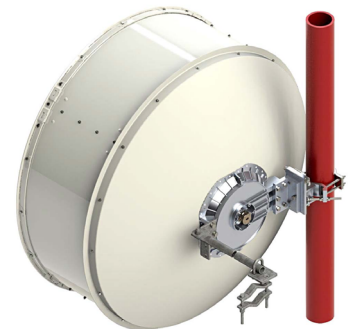
N110082D073A

PTP 820 3' ANT,SP,11GHz,RFU-C
TYPE&Std UBR100 - Andrew
Dish Size: 0.9 m (3 ft)
Frequency: 10.125 – 11.7 GHz
Gain: 39 dBi
Polarity: Single
Connector: UBR100
Shipping: Global



N110082D100A

PTP 820 4' ANT,SP,11GHz,RFU-C
TYPE&UBR100 - Radiowave
Dish Size: 1.2 m (4 ft)
Frequency: 10.7 11.7 GHz
Gain: 41.4 dBi
Polarity: Single
Connector: UBR100
Shipping: NA & CALA Only

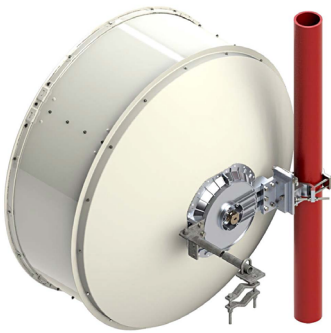


N110082D075A

PTP 820 4' ANT,SP,11GHz,RFU-C
TYPE&Std UBR100 - Andrew
Dish Size: 1.2 m (4 ft)
Frequency: 10.125 – 11.7 GHz
Gain: 41 dBi
Polarity: Single
Connector: UBR100
Shipping: Global

Microwave Antenna Selection Guide

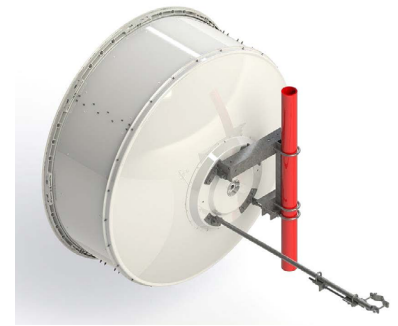
Microwave



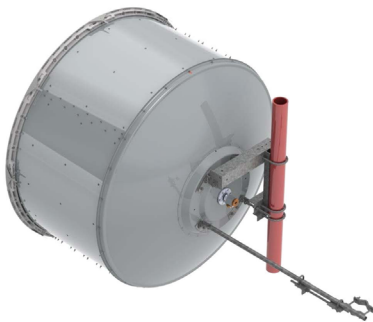
C100082D049B
 SHPX4 - 4' ANT, 10_11GHz
 with Radome, Dual Pol, CPR90G
 Dish Size: 1.2 m (4 ft)
 Frequency: 10 - 11.7 GHz
 Gain: 41.3 dBi
 Polarity: Dual
 Connector: CPR90G
 Shipping: Global



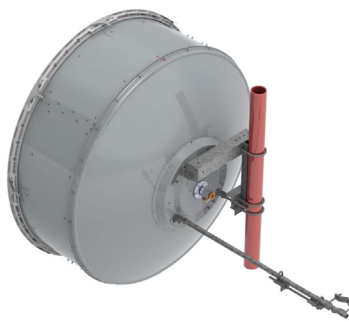
N110082D102A
 PTP 820 6' ANT,SP,11GHz,RFU-C
 TYPE&UBR100 - Radiowave
 Dish Size: 1.8 m (6 ft)
 Frequency: 10.7 - 11.7 GHz
 Gain: 43.8 dBi
 Polarity: Single
 Connector: UBR100
 Shipping: NA & CALA Only



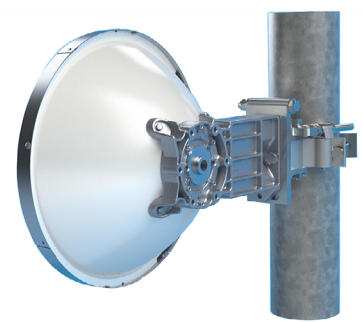
N110082D077A
 PTP 820 6' ANT,SP,10_11GHz,RFU-C
 TYPE&Std UBR100 - Andrew
 Dish Size: 1.8 m (6 ft)
 Frequency: 10 - 11.7 GHz
 Gain: 44.8 dB
 Polarity: Single
 Connector: UBR100
 Shipping: Global



N100082D001A
 USX6 - 6' ANT, 11W GHz
 with Radome, Dual Pol, CPR90G
 Dish Size: 1.8 m (6 ft)
 Frequency: 10 - 11.7 GHz
 Gain: 44.3 dBi
 Polarity: Dual
 Connector: CPR90G
 Shipping: Global



C100082D050B
 HX6 - 6' ANT, 10_11 GHz
 with Radome, Dual Pol, CPR90G
 Dish Size: 1.8 m (6 ft)
 Frequency: 10 - 11.7 GHz
 Gain: 44.3 dBi
 Polarity: Dual
 Connector: CPR90G
 Shipping: Global



N130082D043A
 PTP 820 1' ANT,SP,13GHz,RFU-C
 TYPE&Std UBR120 - Andrew
 Dish Size: 0.3 m (1ft)
 Frequency: 12.7 - 13.25 GHz
 Gain: 31 dBi
 Polarity: Single
 Connector: UBR120
 Shipping: Global

Microwave Antenna Selection Guide

Microwave



N130082D063A

PTP 820 1' ANT,SP,13GHz,RFU-C
TYPE&UBR120 - Radiowave
Dish Size: 0.3 m (1 ft)
Frequency: 12.7 – 13.25 GHz
Gain: 29.7 dBi
Polarity: Single
Connector: UBR120
Shipping: NA & CALA Only



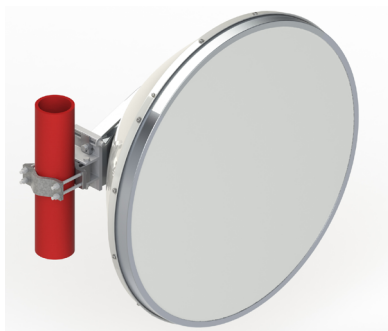
N130082D045A

PTP 820 2' ANT,SP,13GHz,RFU-C
TYPE&Std UBR120 - Andrew
Dish Size: 0.6 m (2 ft)
Frequency: 12.7 – 13.25 GHz
Gain: 36.2 dBi
Polarity: Single
Connector: UBR120
Shipping: Global



N130082D064A

PTP 820 2' ANT,SP,13GHz,RFU-C
TYPE&UBR120 - Radiowave
Dish Size: 0.6 m (2 ft)
Frequency: 12.7 – 13.25 GHz
Gain: 36.1 dBi
Polarity: Single
Connector: UBR120
Shipping: NA & CALA Only



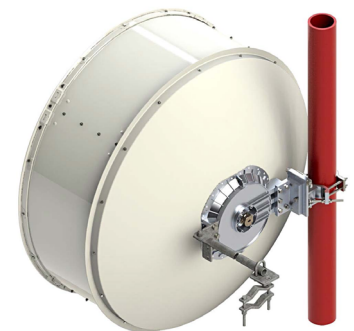
N130082D047A

PTP 820 3' ANT,SP,13GHz,RFU-C
TYPE&Std UBR120 - Andrew
Dish Size: 0.9 m (3 ft)
Frequency: 12.7 – 13.25 GHz
Gain: 40.1 dBi
Polarity: Single
Connector: UBR120
Shipping: Global



N130082D065A

PTP 820 3' ANT,SP,13GHz,RFU-C
TYPE&UBR120 - Radiowave
Dish Size: 0.9 m (3 ft)
Frequency: 12.7 – 13.25 GHz
Gain: 38.9 dBi
Polarity: Single
Connector: UBR120
Shipping: NA & CALA Only



N130082D048A

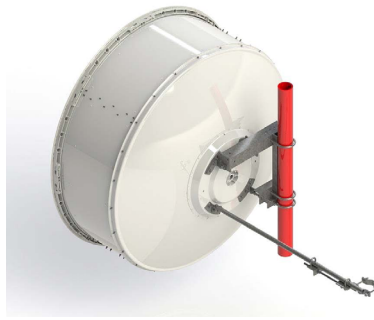
PTP 820 4' ANT,SP,13GHz,RFU-C
TYPE&Std UBR120 - Andrew
Dish Size: 1.2 m (4 ft)
Frequency: 12.7 – 13.25 GHz
Gain: 42.1 dBi
Polarity: Single
Connector: UBR120
Shipping: Global

Microwave Antenna Selection Guide

Microwave



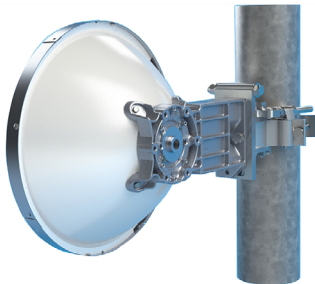
N130082D066A
 PTP 820 4' ANT,SP,13GHz,RFU-C
 TYPE&UBR120 - Radiowave
 Dish Size: 0.12 m (4 ft)
 Frequency: 12.7 – 13.25 GHz
 Gain: 42 dBi
 Polarity: Single
 Connector: UBR120
 Shipping: NA & CALA Only



N130082D050A
 PTP 820 6' ANT,SP,13GHz,RFU-C
 TYPE&Std UBR120 - Andrew
 Dish Size: 1.8 m (6 ft)
 Frequency: 12.7 – 13.25 GHz
 Gain: 45.2 dBi
 Polarity: Single
 Connector: UBR120
 Shipping: Global



N130082D067A
 PTP 820 6' ANT,SP,13GHz,RFU-C
 TYPE&UBR120 - Radiowave
 Dish Size: 1.8 m (6 ft)
 Frequency: 12.7 – 13.25 GHz
 Gain: 44.6 dBi
 Polarity: Single
 Connector: UBR120
 Shipping: NA & CALA Only



N150082D065A
 PTP 820 1' ANT,SP,15GHz,RFU-C
 TYPE&Std UBR140 - Andrew
 Dish Size: 0.3 m (1 ft)
 Frequency: 14.25 - 15.35 GHz
 Gain: 32.6 dBi
 Polarity: Single
 Connector: UBR140
 Shipping: Global



N150082D085A
 PTP 820 1' ANT,SP,15GHz,RFU-C
 TYPE&UBR140 - Radiowave
 Dish Size: 0.3 m (1 ft)
 Frequency: 14.25 - 15.35 GHz
 Gain: 31.3 dBi
 Polarity: Single
 Connector: UBR140
 Shipping: NA & CALA Only



N150082D086A
 PTP 820 2' ANT,SP,15GHz,RFU-C
 TYPE&UBR140 - Radiowave
 Dish Size: 0.6 m (2 ft)
 Frequency: 14.25 - 15.35 GHz
 Gain: 37.3 dBi
 Polarity: Single
 Connector: UBR140
 Shipping: NA & CALA Only

Microwave Antenna Selection Guide

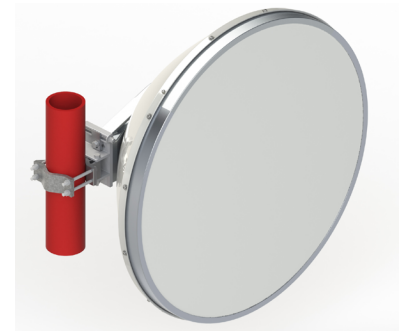
Microwave



N150082D067A
 PTP 820 2' ANT,SP,15GHz,RFU-C
 TYPE&Std UBR140 - Andrew
 Dish Size: 0.6 m (2 ft)
 Frequency: 14.4 - 15.35 GHz
 Gain: 37.2 dBi
 Polarity: Single
 Connector: UBR140
 Shipping: Global



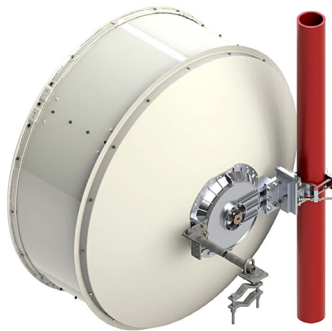
N150082D087A
 PTP 820 3' ANT,SP,15GHz,RFU-C
 TYPE&UBR140 - Radiowave
 Dish Size: 0.9 m (3 ft)
 Frequency: 14.25 - 15.35 GHz
 Gain: 40.2 dBi
 Polarity: Single
 Connector: UBR140
 Shipping: NA & CALA Only



N150082D069A
 PTP 820 3' ANT,SP,15GHz,RFU-C
 TYPE&Std UBR140 - Andrew
 Dish Size: 0.9 m (3 ft)
 Frequency: 14.4 - 15.35 GHz
 Gain: 41.4 dBi
 Polarity: Single
 Connector: UBR140
 Shipping: Global



N150082D088A
 PTP 820 4' ANT,SP,15GHz,RFU-C
 TYPE&UBR140 - Radiowave
 Dish Size: 1.2 m (4 ft)
 Frequency: 14.25 - 15.35 GHz
 Gain: 42.7 dBi
 Polarity: Single
 Connector: UBR140
 Shipping: NA & CALA Only



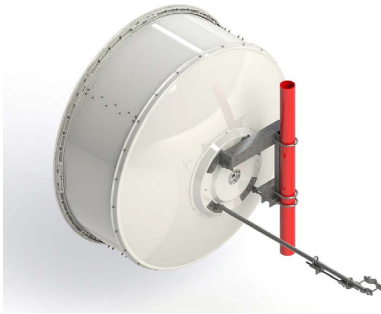
N150082D070A
 PTP 820 4' ANT,SP,15GHz,RFU-C
 TYPE&Std UBR140 - Andrew
 Dish Size: 1.2 m (4 ft)
 Frequency: 14.25 - 15.35 GHz
 Gain: 43.1 dBi
 Polarity: Single
 Connector: UBR140
 Shipping: Global



N150082D089A
 PTP 820 6' ANT,SP,15GHz,RFU-C
 TYPE&UBR140 - Radiowave
 Dish Size: 1.8 m (6 ft)
 Frequency: 14.25 - 15.35 GHz
 Gain: 46.2 dBi
 Polarity: Single
 Connector: UBR140
 Shipping: NA & CALA Only

Microwave Antenna Selection Guide

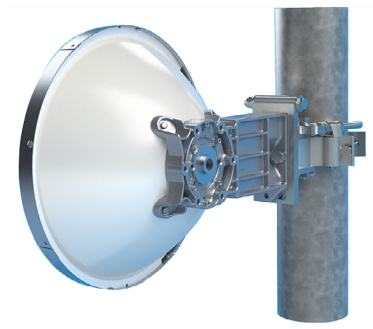
Microwave



N150082D072A
 PTP 820 6' ANT,SP,15GHz,RFU-C
 TYPE&Std UBR140 - Andrew
 Dish Size: 1.8 m (6 ft)
 Frequency: 14.25 - 15.35 GHz
 Gain: 46.5 dBi
 Polarity: Single
 Connector: UBR140
 Shipping: Global



N180082D051A
 PTP 820 1' ANT,SP,18GHz,RFU-C
 TYPE&UBR220 - Radiowave
 Dish Size: 0.3 m (1 ft)
 Frequency: 17.7 19.7 GHz
 Gain: 34.4 dBi
 Polarity: Single
 Connector: UBR220
 Shipping: NA & CALA Only



N180082D031A
 PTP 820 1' ANT,SP,18GHz,RFU-C
 TYPE&Std UBR220 – Andrew
 Dish Size: 0.3 m (1 ft)
 Frequency: 17.7 19.7 GHz
 Gain: 34.5 dBi
 Polarity: Single
 Connector: UBR220
 Shipping: Global



N180082D052A
 PTP 820 2' ANT,SP,18GHz,RFU-C
 TYPE&UBR220 - Radiowave
 Dish Size: 0.6 m (2 ft)
 Frequency: 17.7 19.7 GHz
 Gain: 39 dBi
 Polarity: Single
 Connector: UBR220
 Shipping: NA & CALA Only



N180082D033A
 PTP 820 2' ANT,SP,18GHz,RFU-C
 TYPE&Std UBR220 - Andrew
 Dish Size: 0.6 m (2 ft)
 Frequency: 17.7 19.7 GHz
 Gain: 39.1 dBi
 Polarity: Single
 Connector: UBR220
 Shipping: Global



N180082D053A
 PTP 820 3' ANT,SP,18GHz,RFU-C
 TYPE&UBR220 - Radiowave
 Dish Size: 0.9 m (3 ft)
 Frequency: 17.7 19.7 GHz
 Gain: 43.7 dBi
 Polarity: Single
 Connector: UBR220
 Shipping: NA & CALA Only

Microwave Antenna Selection Guide

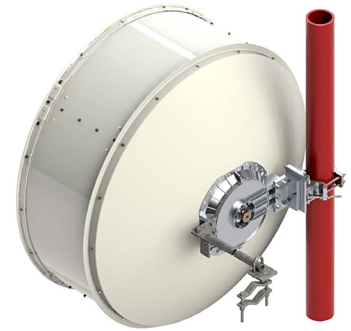
Microwave



N180082D035A
 PTP 820 3' ANT,SP,18GHz,RFU-C
 TYPE&Std UBR220 - Andrew
 Dish Size: 0.9 m (3 ft)
 Frequency: 17.7 19.7 GHz
 Gain: 43.7 dBi
 Polarity: Single
 Connector: UBR220
 Shipping: Global



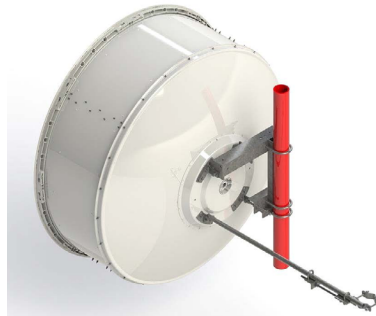
N180082D054A
 PTP 820 4' ANT,SP,18GHz,RFU-C
 TYPE&UBR220 - Radiowave
 Dish Size: 1.2 m (4 ft)
 Frequency: 17.7 19.7 GHz
 Gain: 44.9 dBi
 Polarity: Single
 Connector: UBR220
 Shipping: NA & CALA Only



N180082D036A
 PTP 820 4' ANT,SP,18GHz,RFU-C
 TYPE&Std UBR220 - Andrew
 Dish Size: 1.2 m (4 ft)
 Frequency: 17.7 19.7 GHz
 Gain: 45.1 dBi
 Polarity: Single
 Connector: UBR220
 Shipping: Global



N180082D055A
 PTP 820 6' ANT,SP,18GHz,RFU-C
 TYPE&UBR220 - Radiowave
 Dish Size: 1.8 m (6 ft)
 Frequency: 17.7 19.7 GHz
 Gain: 48.5 dBi
 Polarity: Single
 Connector: UBR220
 Shipping: NA & CALA Only



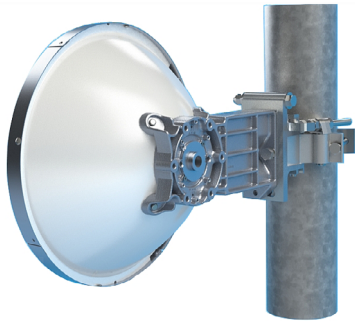
N180082D038A
 PTP 820 6' ANT,SP,18GHz,RFU-C
 TYPE&Std UBR220 - Andrew
 Dish Size: 1.8 m (6 ft)
 Frequency: 17.7 19.7 GHz
 Gain: 48.4 dBi
 Polarity: Single
 Connector: UBR220
 Shipping: Global



N230082D041A
 PTP 820 1' ANT,SP,23GHz,RFU-C
 TYPE&UBR220 - Radiowave
 Dish Size: 0.3 m (1 ft)
 Frequency: 21.2 23.6 GHz
 Gain: 35.5 dBi
 Polarity: Single
 Connector: UBR220
 Shipping: NA & CALA Only

Microwave Antenna Selection Guide

Microwave



N230082D021A

PTP 820 1' ANT,SP,23GHz,RFU-C
 TYPE&Std UBR220 - Andrew
 Dish Size: 0.3 m (1 ft)
 Frequency: 21.2 23.6 GHz
 Gain: 35.9 dBi
 Polarity: Single
 Connector: UBR220
 Shipping: Global



N230082D042A

PTP 820 2' ANT,SP,23GHz,RFU-C
 TYPE&UBR220 - Radiowave
 Dish Size: 0.6 m (2 ft)
 Frequency: 21.2 23.6 GHz
 Gain: 40.7 dBi
 Polarity: Single
 Connector: UBR220
 Shipping: NA & CALA Only



N230082D023A

PTP 820 2' ANT,SP,23GHz,RFU-C
 TYPE&Std UBR220 - Andrew
 Dish Size: 0.6 m (2 ft)
 Frequency: 21.2 23.6 GHz
 Gain: 41.0 dBi
 Polarity: Single
 Connector: UBR220
 Shipping: Global



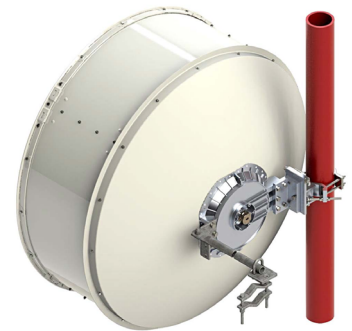
N230082D043A

PTP 820 3' ANT,SP,23GHz,RFU-C
 TYPE&UBR220 - Radiowave
 Dish Size: 10.9 m (3 ft)
 Frequency: 21.2 23.6 GHz
 Gain: 44.2 dBi
 Polarity: Single
 Connector: UBR220
 Shipping: NA & CALA Only



N230082D025A

PTP 820 3' ANT,SP,23GHz,RFU-C
 TYPE&Std UBR220 - Andrew
 Dish Size: 0.9 m (3 ft)
 Frequency: 21.2 23.6 GHz
 Gain: 45.0 dBi
 Polarity: Single
 Connector: UBR220
 Shipping: Global

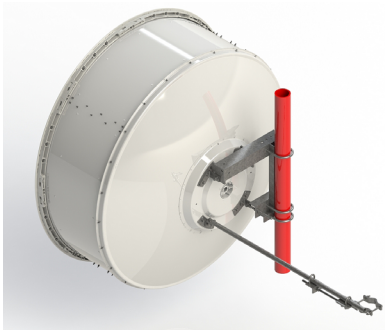


N230082D026A

PTP 820 4' ANT,SP,23GHz,RFU-C
 TYPE&Std UBR220 - Andrew
 Dish Size: 1.2 m (4 ft)
 Frequency: 21.2 23.6 GHz
 Gain: 47.0 dBi
 Polarity: Single
 Connector: UBR220
 Shipping: Global

Microwave Antenna Selection Guide

Microwave



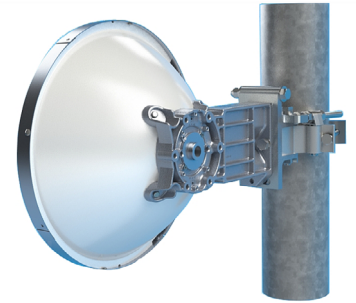
N230082D028A

PTP 820 6' ANT,SP,23GHz,RFU-C
 TYPE&Std UBR220 - Andrew
 Dish Size: 1.8 m (6 ft)
 Frequency: 21.2 - 23.6 GHz
 Gain: 49.9 dBi
 Polarity: Single
 Connector: UBR220
 Shipping: Global



N230082D045A

PTP 820 6' ANT,SP,23GHz,RFU-C
 TYPE&UBR220 - Radiowave
 Dish Size: 1.8 m (6 ft)
 Frequency: 21.2 - 23.6 GHz
 Gain: 49.4 dBi
 Polarity: Single
 Connector: UBR220
 Shipping: NA & CALA Only



N260082D017A

PTP 820 1' ANT,SP,26GHz,RFU-C
 TYPE&Std UBR220 - Andrew
 Dish Size: 0.3 m (1 ft)
 Frequency: 24.25 - 26.5 GHz
 Gain: 37.1 dBi
 Polarity: Single
 Connector: UBR220
 Shipping: Global



N260082D034A

PTP 820 1' ANT,SP,26GHz,RFU-C
 TYPE&UBR220 - Radiowave
 Dish Size: 0.3 m (1 ft)
 Frequency: 24.25 - 26.5 GHz
 Gain: 36.5 dBi
 Polarity: Single
 Connector: UBR220
 Shipping: NA & CALA Only



N260082D019A

PTP 820 2' ANT,SP,26GHz,RFU-C
 TYPE&Std UBR220 - Andrew
 Dish Size: 0.6 m (2 ft)
 Frequency: 24.25 - 26.5 GHz
 Gain: 42.5 dBi
 Polarity: Single
 Connector: UBR220
 Shipping: Global



N260082D035A

PTP 820 2' ANT,SP,26GHz,RFU-C
 TYPE&UBR220 - Radiowave
 Dish Size: 0.6 m (2 ft)
 Frequency: 24.25 - 26.5 GHz
 Gain: 41.5 dBi
 Polarity: Single
 Connector: UBR220
 Shipping: NA & CALA Only

Microwave Antenna Selection Guide

Microwave



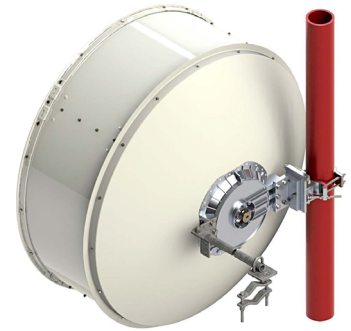
N260082D021A

PTP 820 3' ANT,SP,26GHz,RFU-C
 TYPE&Std UBR220 - Andrew
 Dish Size: 0.6 m (2 ft)
 Frequency: 24.25 - 26.5 GHz
 Gain: 46.2 dBi
 Polarity: Single
 Connector: UBR220
 Shipping: NA & CALA Only



N260082D036A

PTP 820 3' ANT,SP,26GHz,RFU-C
 TYPE&UBR220 - Radiowave
 Dish Size: 0.9 m (3 ft)
 Frequency: 24.25 - 26.5 GHz
 Gain: 45 dBi
 Polarity: Single
 Connector: UBR220
 Shipping: Global



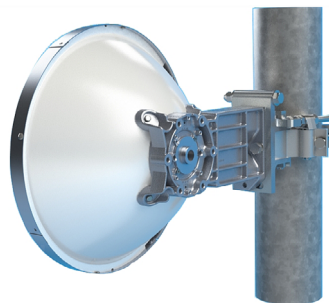
N260082D022A

PTP 820 4' ANT,SP,26GHz,RFU-C
 TYPE&Std UBR220 - Andrew
 Dish Size: 1.2 m (4 ft)
 Frequency: 24.25 - 26.5 GHz
 Gain: 47.8 dBi
 Polarity: Single
 Connector: UBR220
 Shipping: NA & CALA Only



N260082D037A

PTP 820 4' ANT,SP,26GHz,RFU-C
 TYPE&UBR220 - Radiowave
 Dish Size: 1.8 m (6 ft)
 Frequency: 24.25 - 26.5 GHz
 Gain: 47.2 dBi
 Polarity: Single
 Connector: UBR220
 Shipping: Global



N280082D029A

PTP 820 1' ANT,SP,28GHz,RFU-C
 TYPE&Std UBR320 - Andrew
 Dish Size: 0.3 m (1 ft)
 Frequency: 27.5 - 29.5 GHz
 Gain: 38.6 dBi
 Polarity: Single
 Connector: UBR320
 Shipping: Global



N280082D044A

PTP 820 1' ANT,SP,28GHz,RFU-C
 TYPE&UBR320 - Radiowave
 Dish Size: 0.3 m (1 ft)
 Frequency: 27.3 - 31.3 GHz
 Gain: 37 dBi
 Polarity: Single
 Connector: UBR320
 Shipping: NA & CALA Only

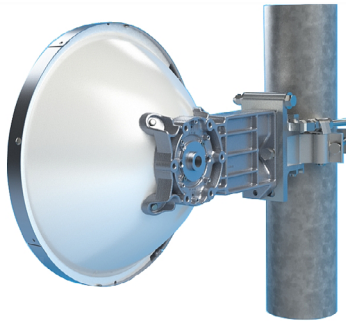
Microwave Antenna Selection Guide

Microwave



N280082D031A

PTP 820 2' ANT,SP,28GHz,RFU-C
 TYPE&Std UBR320 - Andrew
 Dish Size: 0.6 m (2 ft)
 Frequency: 27.5 - 29.5 GHz
 Gain: 43.2 dBi
 Polarity: Single
 Connector: UBR320
 Shipping: Global



N320082D013A

PTP 820 1' ANT,SP,32GHz,RFU-C
 TYPE&Std UBR320 - Andrew
 Dish Size: 0.3 m (1 ft)
 Frequency: 31.8 - 33.4 GHz
 Gain: 39.1 dBi
 Polarity: Single
 Connector: UBR320
 Shipping: Global



N320082D027A

PTP 820 1' ANT,SP,32GHz,RFU-C
 TYPE&UBR320 - Radiowave
 Dish Size: 0.3 m (1 ft)
 Frequency: 31.3 - 33.4 GHz
 Gain: 38.1 dBi
 Polarity: Single
 Connector: UBR320
 Shipping: NA & CALA Only



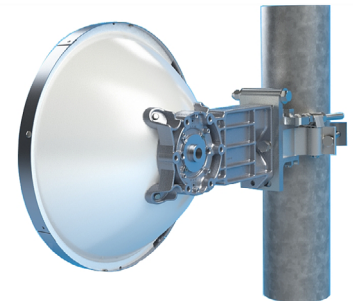
N320082D015A

PTP 820 2' ANT,SP,32GHz,RFU-C
 TYPE&Std UBR320 - Andrew
 Dish Size: 0.6 m (2 ft)
 Frequency: 31.0 - 33.4 GHz
 Gain: 44 dBi
 Polarity: Single
 Connector: UBR320
 Shipping: Global



N320082D028A

PTP 820 2' ANT,SP,32GHz,RFU-C
 TYPE&UBR320 - Radiowave
 Dish Size: 0.6 m (2 ft)
 Frequency: 31.3 - 33.4 GHz
 Gain: 43.1 dBi
 Polarity: Single
 Connector: UBR320
 Shipping: NA & CALA Only



N380082D037A

PTP 820 1' ANT,SP,38GHz,RFU-C
 TYPE&Std UBR320 - Andrew
 Dish Size: 0.3 m (1 ft)
 Frequency: 37.0 - 40.0 GHz
 Gain: 40.5 dBi
 Polarity: Single
 Connector: UBR320
 Shipping: Global

Microwave Antenna Selection Guide

Microwave



N380082D052A

PTP 820 1' ANT,SP,38GHz,RFU-C
TYPE&UBR320 - Radiowave
Dish Size: 0.6 m (2 ft)
Frequency: 37.0 - 40.0 GHz
Gain: 39.7 dBi
Polarity: Single
Connector: UBR320
Shipping: NA & CALA Only



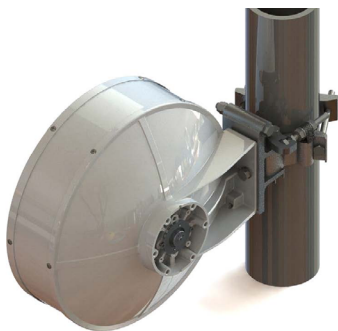
N380082D039A

PTP 820 2' ANT,SP,38GHz,RFU-C
TYPE&Std UBR320 - Andrew
Dish Size: 0.9 m (3 ft)
Frequency: 37.0 - 40.0 GHz
Gain: 45.8 dBi
Polarity: Single
Connector: UBR320
Shipping: Global



N380082D053A

PTP 820 2' ANT,SP,38GHz,RFU-C
TYPE&UBR320 - Radiowave
Dish Size: 1.2 m (4 ft)
Frequency: 37.0 - 40.0 GHz
Gain: 44.7 dBi
Polarity: Single
Connector: UBR320
Shipping: NA & CALA Only



N800082D005A

PTP 820 1' ANT,SP,80GHz, RFU-E
TYPE & UG387 - Andrew
Dish Size: 1.8 m (6 ft)
Frequency: 71.0 - 86.0 GHz
Gain: 47.0 dBi
Polarity: Single
Connector: UG387
Shipping: Global



N800082D009A

PTP 820 2' ANT,SP,80GHz, RFU-E
TYPE & UG387 - Andrew
Dish Size: 0.6 m (2 ft)
Frequency: 71.0 - 86.0 GHz
Gain: 51.5 dBi
Polarity: Single
Connector: UG387
Shipping: Global



N800082D010A

PTP 820 2' ANT,DP,18 & 80 GHz
multi-band
Dish Size: 0.6 m (2 ft)
Frequency: 17.7 – 19.7 GHz,
71 – 76 GHz, 81 – 86 GHz
Gain: 50 – 51 dBi
Polarity: Dual
Connector: CIRC/WR12
Shipping: Global

Microwave Antenna Selection Guide

Microwave



N800082D006A

PTP 820 2' ANT,SP,18 & 80 GHz
multi-band

Dish Size: 0.6 m (2 ft)

Frequency: 17.7 – 19.7 GHz,
71 – 76 GHz, 81 – 86 GHz

Gain: 49 – 50 dBi

Polarity: Single

Connector: UBR220/WR12

Shipping: Global



N800082D011A

PTP 820 2' ANT,DP,23 & 80 GHz
multi-band

Dish Size: 0.6 m (2 ft)

Frequency: 21.2 – 23.6 GHz,
71 – 76, 81- 86 GHz

Gain: 50 – 51 dBi

Polarity: Dual

Connector: CIRC/WR12

Shipping: Global



N800082D007A

PTP 820 2' ANT,SP,23 & 80 GHz
multi-band

Dish Size: 0.6 m (2 ft)

Frequency: 21.2 – 23.6 GHz,
71 – 76, 81- 86 GHz

Gain: 49 – 50 dBi

Polarity: Single

Connector: UBR220/WR12

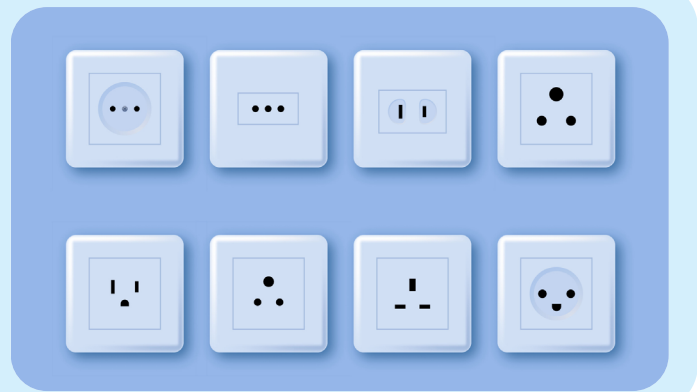
Shipping: Global

Power Accessories

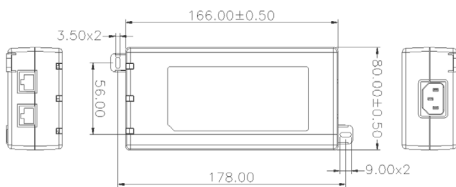
Power Supplies

QUICK LOOK:

Power supply accessories for various Cambium Networks products along with product power requirements and power supply compatibility matrix.



Power Supply



N000082L164A

PTP 820C INDOOR AC POE INJECTOR, 90W

Input connectors: C14

Output connectors: RJ45

Input power: AC

Output power: DC

Watt: 90W

Volts: 56V

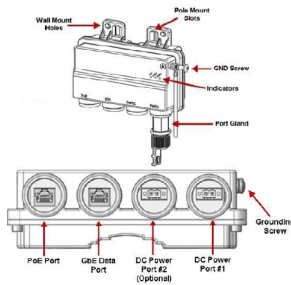
Op efficiency: Level 6

Indoor/ OD: Indoor

Temp: (-10°C to 40°C)

IP Rating: X

Ethernet speed: 1G



N000082L022A

PTP 820 PoE Injector all outdoor, redundant DC input, +24VDC support

Input Connector: Direct Wire

Output connectors: RJ45

Input power: DC

Output power: DC

Watt: 90W

Volts: 56V

Op efficiency: Level 6

Indoor/ OD: Outdoor

Temp: -45°C to +60°C

IP Rating: IP66

Ethernet speed: 1G



C000065L002D

AC+DC Enhanced Power Injector 58V

Input Connector: DCin screw terminals /2-wire AC inlet; IEC60320 C8

Output connectors: RJ45 / DCout screw terminals

Input power: AC + DC

Output power: DC

Watt: 100W

Volts: 58V

Op efficiency: Level 6

Indoor/ OD: ID/ OD

Temp: (-40°C to +50°C)

IP Rating: IP20

Ethernet speed: 1G

SFP Guide

SFP Module Selection Guide

PTP 8xx SFPs



N000082L213A

PTP 820 SFP, single fiber, 1490nm Tx/1310nm Rx, SM, EXT TEMP

Speed: 1 G

Mode: Single

Wavelength: 1490nm TX & 1310 RX

Spare Glands: N000082L014A

Product Support: PTP 820

Operating Temperature: (-10°C to +70°C)



N000082L214A

PTP 820 SFP, single fiber, 1310nm Tx/1490nm Rx, SM, EXT TEMP

Speed: 1 G

Mode: Single

Wavelength: 1310nm TX & 1490 RX

Spare Glands: N000082L014A

Product Support: PTP 820

Operating Temperature: (-10°C to +70°C)



N800082L010A

PTP 820 CSFP, 1310nm Tx/1490nm Rx, SM, EXT TEMP

Speed: 1 G

Mode: Single

Wavelength: 1310nm TX & 1490 RX

Spare Glands: N000082L014A

Product Support: PTP 820

Operating Temperature: (-40°C to +85°C)



N800082L011A

PTP 820 CSFP, 1490nm Tx/1310nm Rx, SM, EXT TEMP

Speed: 1 G

Mode: Single

Wavelength: 1490nm TX & 1310 RX

Spare Glands: N000082L014A

Product Support: PTP 820

Operating Temperature: (-40°C to +85°C)

SFP Module Selection Guide

PTP 8xx SFPs



N800082L012A

PTP 820 SFP+, 850nm,MM, 10Gbit, Industrial Grade

Speed: 10 G

Mode: Multi

Wavelength: 850nm

Spare Glands: N000082L014A

Product Support: PTP 820

Operating Temperature: (-40°C to +85°C)



N800082L013A

PTP 820/850 SFP+, 1310nm,SM, 10Gbit, Industrial Grade

Speed: 10 G

Mode: Single

Wavelength: 1310nm

Spare Glands: N000082L014A

Product Support: PTP 820 / PTP 850

Operating Temperature: (-40°C to +85°C)

Cable Guide

Cable Selection Guide

RJ45

Name	Description	Length (meters)	Type
WB3176A	328 ft (100 m) Reel Outdoor Copper Clad CAT5E (Recommended for PTP)	100	CAT5E
N000000L155A	CAT6A Outdoor Cable, 100m	100	CAT6A
WB3175A	1000 ft Reel Outdoor Copper Clad CAT5E (Recommended for PTP)	304.8	CAT5E
N000082L172B	CAT6A Outdoor Cable, 305m	305	CAT6A

Coaxial

Name	Description	Length (meters)
30010194001	50 Ohm Braided Coaxial Cable - 75 meter	75
30010195001	50 Ohm Braided Coaxial Cable - 500 meter	500

DC Cable

Name	Description	Length (meters)
N000082L181A	PTP 820 Outdoor DC Cable, 10AWG, 150m, M28 Gland to Open End	150
N000082L182A	PTP 820 Outdoor DC Cable, 10AWG, 200m, M28 Gland to Open End	200
N000082L183A	PTP 820 Outdoor DC Cable, 10AWG, 250m, M28 Gland to Open End	250
N000082L184A	PTP 820 Outdoor DC Cable, 10AWG, 300m, M28 Gland to Open End	300

Optical

Name	Description	Length (meters)	Mode
N000082L215A	Optical CABLE,MM, 1m	1	Multi Mode fiber
N000082L187A	Optical CABLE,SM, 10m	10	Single Mode Fiber
N000082L192A	Optical CABLE,MM, 10m	10	Multi Mode fiber
N000082L139A	Optical CABLE,SM, 30m	30	Single Mode Fiber
N000082L194A	Optical CABLE,MM, 30m	30	Multi Mode fiber
N000082L205A	Optical Cable,MPO(F)/MPO(F),4P,Type B,30m,MM,OM4,M28 Gland,ARM	30	Multi Mode fiber
N000082L140A	Optical CABLE,SM, 50m	50	Single Mode Fiber
N000082L206A	Optical Cable,MPO(F)/MPO(F),4P,Type B,50m,MM,OM4,M28 Gland,ARM	50	Multi Mode fiber
N000082L141A	Optical CABLE,SM, 80m	80	Single Mode Fiber
N000082L196A	Optical CABLE,MM, 80m	80	Multi Mode fiber
N000082L207A	Optical Cable,MPO(F)/MPO(F),4P,Type B,80m,MM,OM4,M28 Gland,ARM	80	Multi Mode fiber
N000082L142A	Optical CABLE,SM, 100m	100	Single Mode Fiber
N000082L208A	Optical Cable,MPO(F)/MPO(F),4P,Type B,100m,MM,OM4,M28 Gland,ARM	100	Multi Mode fiber
N000082L143A	Optical CABLE,SM, 150m	150	Single Mode Fiber
N000082L198A	Optical CABLE,MM, 150m	150	Multi Mode fiber
N000082L209A	Optical Cable,MPO(F)/MPO(F),4P,Type B,150m,MM,OM4,M28 Gland,ARM	150	Multi Mode fiber

Cable Selection Guide

Miscellaneous

Name	Description
7009304001	Hoisting Grip for CNT-400 cable
C000082L153A	PTP 820G Fast Ethernet Protection Y-cable, 1.34m, Cat5E
C000082L154A	PTP 820G TDM Protection Y cable, 0.6m, 120 ohm
C000082L155A	PTP820G Splitter cable for protection and management, 1.34m, CAT5E
N000000L127A	CABLE ASSY, SHIELDED, 4C STEREO PLUG -3.5MM TO RJ45
N000082L146A	PTP 820 Fiber 1+1 Splitter, SM
N000082L147A	PTP 820 Fiber Adapter
N000081L008A	IF cable for PTP810 MMU and IRFU
N000082L023A	PTP 820 16E1 cable MDR68-RJ45 3M,LA,cross
N000082L024A	PTP 820 16E1 cable open-end, 3M
N000082L025A	PTP 820 16T1 cable MDR68-RJ45 3M,LA,cross
N000082L026A	PTP 820 16T1 cable open-end, 3M
N000082L057A	PTP 820 External Alarms open cable 2.5m
N000082L060A	PTP 820C MIMO or Prot management cable 10m
N000082L061A	PTP 820C MIMO or Prot management cable 1m
N000082L063A	PTP 820C,CABLE,SFP,4x4MIMO_DATA_SHARING_KIT_10M
N000082L122A	PTP 820G Ethernet split cable for Management
N000082L136A	PTP 820C/S MIMO or Prot management cable 20m
N000082L138A	PTP 820C,CABLE,SFP,4x4MIMO_DATA_SHARING_KIT_20M
N000082L159A	IF cable for PTP820G IDU and RFU-A
N000082L201A	PTP 850E Extension Cable for protection and XPIC
N000082L202A	PTP 850E Clock sharing Cable for XPIC
N000082L212A	Optical Cable, Dual LC to LC/LC Split, 5.3M, SM, 3 x M28 Gland, outdoor
RDN5785A	3 M (9.8 FT) SUPERFLEX RF LOW LOSS JUMPER CABLE

Glands

Name	Description
N000082L014A	PTP 820 Glands_x5_KIT
N000085L001A	PTP 850 M28 Glands extender

Connector

Name	Description	Type
01010589001	RF CONNECTOR,N,MALE,RIGHT ANGLE FOR CNT-400 CABLE	N-Type Male
09010091001	RF CONNECTOR,N,MALE,STRAIGHT FOR CNT-400 CABLE	N-Type Male
1010589001	RF CONNECTOR,N,MALE,RIGHT ANGLE FOR CNT-400 CABLE	N-Type Male
9010091001	RF CONNECTOR,N,MALE,STRAIGHT FOR CNT-400 CABLE	N-Type Male
N000081L005A	TNC Male for CNT-400 braided cable	TNC Male
N000081L006A	TNC Male Right Angle for CNT-400 braided cable	TNC Male
N000082L174B	RJ45 Connector for CAT6A Cable, Qty 10	RJ 45

LPU and Grounding Guide

Lightning Protection Units and Grounding Selection Guide

Lightning Protection Units



C000000L033A

Gigabit Surge Suppressor (56V), 10/100/1000 BaseT

Volts: 56V
 Type: DC PoE
 Env Protection: IP54
 Transfer Rate: 1000
 Connectors: Two x RJ-45
 Protection Mode: Line-to-line and line-to-ground

Surge Rating: 172A, 10/1000us(L-G) | 230A, 5/320us (EN61000-4-5)
 Mounting: Pole mount or wall mount
 Operating Temperature: -40°C to +60°C
 Grounding Accessories: M5-Termination ring included, C000000L138A

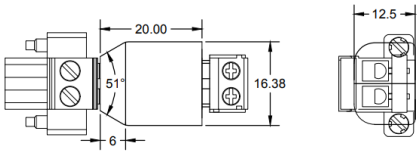


WB3657A

LPU End Kit PTP 800/820

Volts: 56V
 Type: DC Power
 Env Protection: IP67
 Connectors: Two x N-Type Female RF coaxial connector

Protection Mode: Line-to-line and line-to-ground
 Surge Rating: 20kA 8/20us (EN61000-4-5)
 Mounting: Pole mount
 Operating Temperature: -40°C to +60°C
 Grounding Accessories: C000000L138A



N000082L185A

PTP 820 DC surge suppressor

Volts: 56V
 Type: DC Power
 Env Protection: IP54
 Connectors: Screw Terminals
 Protection Mode: Line-to-line and line-to-ground

Surge Rating: 144.9A 10/1000us
 Mounting: Pole mount or wall mount
 Operating Temperature: -40°C to +60°C



N000082D012A

PTP 820 Gas Tube Surge Arrester End Kit

Volts: 56V
 Type: DC Power
 Env Protection: IP67
 Connectors: Two x N-Type Female RF coaxial connector

Protection Mode: Line-to-line and line-to-ground
 Surge Rating: 20kA 8/20 us
 Mounting: Pole mount or wall mount
 Operating Temperature: -30°C to +70°C

LPU and Grounding Selection Guide

Grounding

Name	Description
1010419001	Coaxial Cable Grounding Kits for 1/4" and 3/8" Cable
C000000L138A	Grounding Cable, 0.6m with M6 ring to M6 ring
N000082L116B	Grounding Cable, 1m with M6 ring to M6 ring
N000082L173A	Grounding Kit for CAT5E F/UTP 8mm and Cat6A Cable
N000082L173A	Grounding Kit for CAT5E F/UTP 8mm and Cat6A Cable
WB3616H	Coaxial Cable Installation Assembly Kit (W/O LPU End Kit)
7009343001	Grounding Kit for waveguide EWP52 and EWP63
7009343002	Grounding Kit for waveguide EWP90

ABOUT CAMBIUM NETWORKS

Cambium Networks empowers millions of people with wireless connectivity worldwide. Its wireless portfolio is used by commercial and government network operators as well as broadband service providers to connect people, places and things. With a single network architecture spanning fixed wireless and Wi-Fi, Cambium Networks enables operators to achieve maximum performance with minimal spectrum. End-to-end cloud management transforms networks into dynamic environments that evolve to meet changing needs with minimal physical human intervention. Cambium Networks empowers a growing ecosystem of partners who design and deliver gigabit wireless solutions that just work.

cambiumnetworks.com

05102022